

# The learning formats of the ISE Global Education Hub:

## eLearning Course

A self-paced training which duration ranges from 1 to 1:30 hours, depending on the topic. Generally, this format is used to teach complex concepts through engaging and interactive activities. The content is split into short sections to favour comprehensiveness and learner retention. Splitting the content into sections makes it easier for learners to realize they are progressing through the content and the rewarding feeling upon completion of each section motivates the learner to continue progressing through the different stages of the course. In general, courses are split into the following major sections:

- Introduction
  - Description
  - Learning Objectives
  - Faculty (SMEs)
  - Target Audience
- Core Content
  - Content sections addressing each learning objective
- Summary and Resources
  - Conclusions or takeaway messages
  - Additional resources
  - References
- Next Steps
  - Instructions to claim CME/CPD credits and certificate

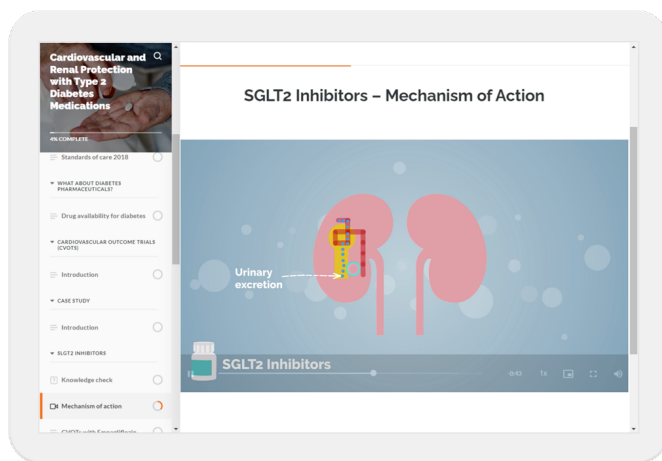


Figure 1: Animated video of an eLearning course on Cardiovascular and Renal Protection with Type 2 Diabetes Medications

Learners can find knowledge checks in the form of quizzes or other interactive activities as they progress. This gives learners the opportunity to self-assess and reinforce the content completed up to that moment.

An eLearning course offers endless opportunities of interactions. Some of the formats that make up their structure:

- Text
- Images (image gallery)
- Video
- Audio only (to explain a chart or a complex process)
- Flashcards

- Labelled graphics (hotspots with additional information on an image)
- Drag & drop (sorting activities)
- Interactive tabs
- Interactive charts

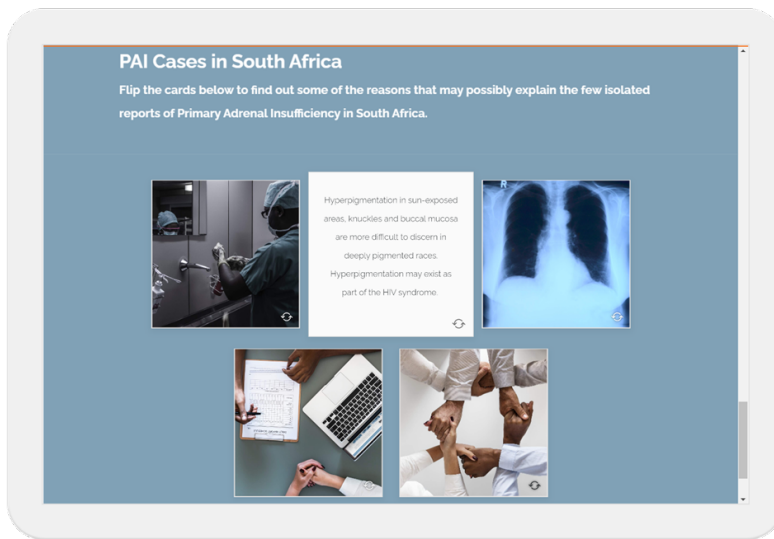


Figure 2: Activity with flashcards of an eLearning course on Adrenal Insufficiency

## Accredited Webinars

All live webinars are recorded and later uploaded to the ISE Global Education Hub under the relevant focus area along with a CME/CPD activity for learners to claim credits. Learners may assess their knowledge on the topic by taking a pre-webinar activity, and apply what they learned after watching the webinar recording by taking a post-webinar activity or interactive case created by the speakers based on the topics discussed in the seminar.


An accredited webinar usually contains the following sections:

- About
  - Live webinar on GLP-1Ras addressing various patient cases
  - Description
  - Learning objectives
  - Faculty (SME) information
  - Accreditation information
- Content
  - Pre-test questions
  - Webinar recording
  - Interactive patient case (for specific webinars)
  - Post-test questions
- Survey + CME Certificate
  - Survey to assess outcomes
  - CME Certificate

### Patient #5

74-year female with a 5 years of type 2 diabetes

- BMI 32, A1C 8.0, Creatinine 1.0
- 2000 mg of metformin/day
- No known heart disease; very active physically



- Would you advise modification to her therapy or management?
- If so, what and why?

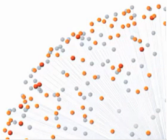


Figure 3: Live webinar on GLP-1Ras addressing various patient cases

Besides medical content, the ISE has also developed mentoring resources to support young professionals in their career development like, for example, live sessions on how to write a successful abstract, how to conduct research, and how to create impactful presentations at medical congresses.

## Interactive Case Studies

These cases are based on real-world patient scenarios. Learners need to make decisions based on a patient's history, clinical background, lab results, etc, and decide what their next steps would be. Because in real life there are not always right or wrong answers, the feedback provided aims at making learners understand the potential consequences of their choices, and explains what the most suitable next step would be based on the information provided.

Watch a teaser of 3 interactive cases on thyroid cancer.

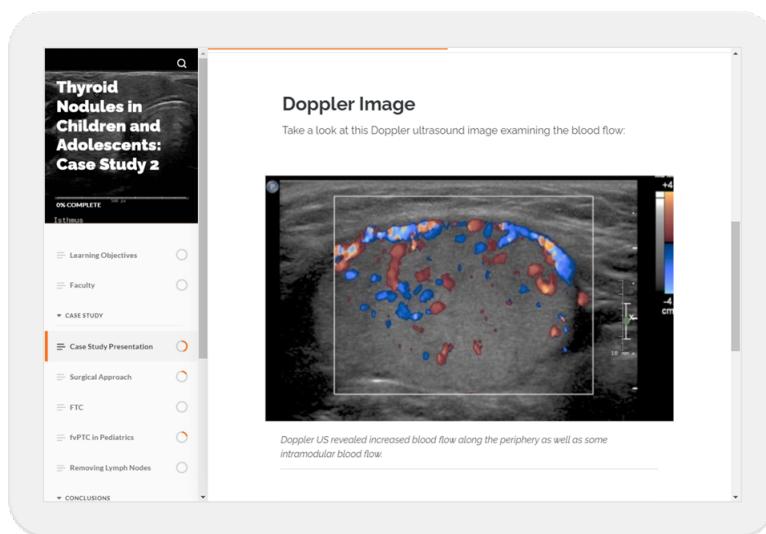


Figure 4: Interactive case study

## MEDBuzz Videos

This is a microlearning initiative in collaboration with the South Asian Federation of Endocrine Societies (SAFES). MEDBuzz videos are short 3 to 5-minute educational videos on hot topics in endocrinology that have proved to be very popular among our audience. They were initially hosted on the ISE Education Hub, but to date the hub directs users to the official MEDBuzz YouTube MEDBuzz channel, which has over 5,000 subscribers.

The videos are recorded via a regular Zoom meeting using a green virtual background. Afterwards, the green background is removed and visual aids and animations are added to support the speaker's presentation. For this, the speaker prepares 3 to 5 slides in advance with the key words and relevant graphics to be shown in the final video. The speaker's words and the visual aids are then synchronized to improve the learning experience.

Around 8 videos are created per year, although the goal of ISE is to develop a timeline to be able to release one video per month.



## Ask the Expert Interviews

These are 10-minute interviews with SMEs who answer challenging questions around a specific topic of endocrinology. The questions are prepared by ISE and shared with the SME in advance. Then, a Zoom meeting is scheduled in which the SME addresses said questions. The video is then edited so that the questions appear as text on the screen, followed by the answer by the SME. Sometimes, SMEs also share supporting literature to upload along the interview video on the ISE Global Education Hub.

## Other

In addition, the Hub also features a library of resources in endocrinology, materials of events organized by ISE's member societies and partner organizations, and key sessions of past ISE congresses.